



AUGUSTA

Matte-beige surface with bold rims and patterns

Contemporary and versatile, Augusta takes on a natural feeling, balancing a matte-beige surface with bold rims and patterns. The collection highlights a selection of neutral dinnerware pieces with a black rim which can be combined with the patterned designs to add an eclectic touch to each table setting. Whether there is a celebration or a simple gathering, Augusta provides a table suitable for all tastes.



The natural colors and nature-inspired patterns lead to timeless and calming table settings.

Top to bottom: Augusta dinner plate and soup/cereal bowl combined with Saga flatware in matte black. Diamond Weave dessert plate with Augusta charger plate, Safra glassware and Riviera pitcher. Mix of Diamond Weave and Little Garden plates.



Above: Augusta complemented with Saga flatware in matte black, Gomos glassware, Maria runners, Luisa napkins, and Le Jardin bulb vase.



Charger plate/platter

34 cm | 13"

COP341-NAB

D34.6 H2.7 cm | 1480 g

D13.5" H1" | 3 lb 4 oz.

2103500.6



Dinner plate

27 cm | 11"

COP271-NAB

D27.0 H2.9 cm | 834 g

D10.75" H1.25" | 1 lb 13 oz.

2101475.6



Salad/dessert plate

21 cm | 8"

COP211-NAB

D21.6 H2.8 cm | 490 g

D8.5" H1" | 1 lb 1 oz.

2101275.6



Bread plate

17 cm | 7"

SLP172-NAB

D16.7 H2.3 cm | 270 g

D6.5" H1" | 10 oz.

2100800.6



Pasta bowl

21 cm | 8"

COP214-NAB

D21.5 H5.5 cm | 0.85 L | 575 g

D7.25" H2" | 29 oz. | 1 lb 4 oz.

2101375.6



Soup/cereal bowl

15 cm | 6"

COS151-NAB

D15.2 H7.3 cm | 0.65 L | 350 g

D6" H3" | 22 oz. | 12 oz.

2101525.6



Serving bowl

28 cm | 11"

SLS281-NAB

D28.6 H13.1 cm | 4.30 L | 1790 g

D11.25" H5.25" | 145 oz. | 3 lb 15 oz.

2104050.1



Mug

0.41 L | 14 oz.

COC131-NAB

13.8 x 9.7 H10.7 cm | 0.41 L | 432 g

5.5" x 4" H4.25" | 14 oz. | 15 oz.

2101325.6



Tea cup and saucer

0.20 L | 7 oz.

COCS01-NAB

14.0 x 10.9 H5.6 cm | 0.20 L D16.8 cm | 460 g

5.5" x 4.25" H2.25" | 7 oz. D6.75" | 1 lb

2102075.6



Coffee cup and saucer

0.08 L | 3 oz.

COCS02-NAB

8.5 x 6.4 H5.6 cm | 0.08 L D13.4 cm | 294 g

3.5" x 2.5" H2.25" | 3 oz. D5.25" | 10 oz.

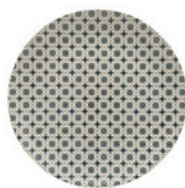
2101775.6

LITTLE GARDEN



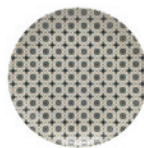
Serving plate
32 cm | 13"

○ HPP321-GDN
D31.5 H1.3 cm | 1154 g
D12.5" H0.5" | 2 lb 9 oz.
2102200.6



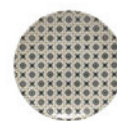
Dinner plate
27 cm | 11"

○ COP271-GDN
D27.0 H2.9 cm | 834 g
D10.75" H1.25" | 1 lb 13 oz.
2101625.6



Salad/dessert plate
21 cm | 8"

○ COP211-GDN
D21.6 H2.8 cm | 490 g
D8.5" H1" | 1 lb 1 oz.
2101375.6



Bread plate
17 cm | 7"

○ SLP172-GDN
D16.7 H2.3 cm | 270 g
D6.5" H1" | 10 oz.
2100850.6



Rect. tray
37 cm | 15"

○ COR371-GDN
36.8 x 12.2 H2.8 cm | 658 g
14.5" x 4.75" H1" | 1 lb 7 oz.
2102600.1



Mini rect. tray
13 cm | 5"

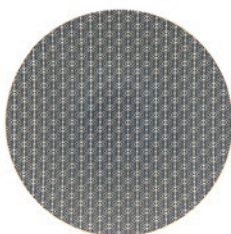
○ COR131-GDN
13.1 x 9.5 H2.2 cm | 151 g
5" x 3.75" H1" | 5 oz.
2101025.6



Mini plate/coaster
12 cm | 5"

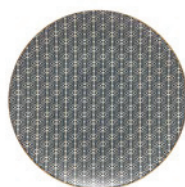
○ HPD121-GDN
D11.5 H1 cm | 120 g
D4.5" H0.5" | 4 oz.
2100625.6

DIAMOND WEAVE



Serving plate
32 cm | 13"

● HPP321-DIA
D31.5 H1.3 cm | 1154 g
D12.5" H0.5" | 2 lb 9 oz.
2102200.1



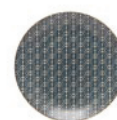
Dinner plate
27 cm | 11"

● COP271-DIA
D27.0 H2.9 cm | 834 g
D10.75" H1.25" | 1 lb 13 oz.
2101625.6



Salad/dessert plate
21 cm | 8"

● COP211-DIA
D21.6 H2.8 cm | 490 g
D8.5" H1" | 1 lb 1 oz.
2101375.6



Bread plate
17 cm | 7"

● SLP172-DIA
D16.7 H2.3 cm | 270 g
D6.5" H1" | 10 oz.
2100850.6



Rect. tray
37 cm | 15"

● COR371-DIA
36.8 x 12.2 H2.8 cm | 658 g
14.5" x 4.75" H1" | 1 lb 7 oz.
2102600.1



Mini rect. tray
13 cm | 5"

● COR131-DIA
13.1 x 9.5 H2.2 cm | 151 g
5" x 3.75" H1" | 5 oz.
2101025.6



Mini plate/coaster
12 cm | 5"

● HPD121-DIA
D11.5 H1 cm | 120 g
D4.5" H0.5" | 4 oz.
2100625.6